



MEWES & DAVIS

60 BISHOPSGATE



MEWES & DAVIS

A modern vision  
for a heritage icon;  
MEWES & DAVIS has  
been reinvented for  
tomorrow's workplace.

A truly unique heritage building offering  
fully-fitted boutique offices with bespoke  
finishes and the highest attention to detail.

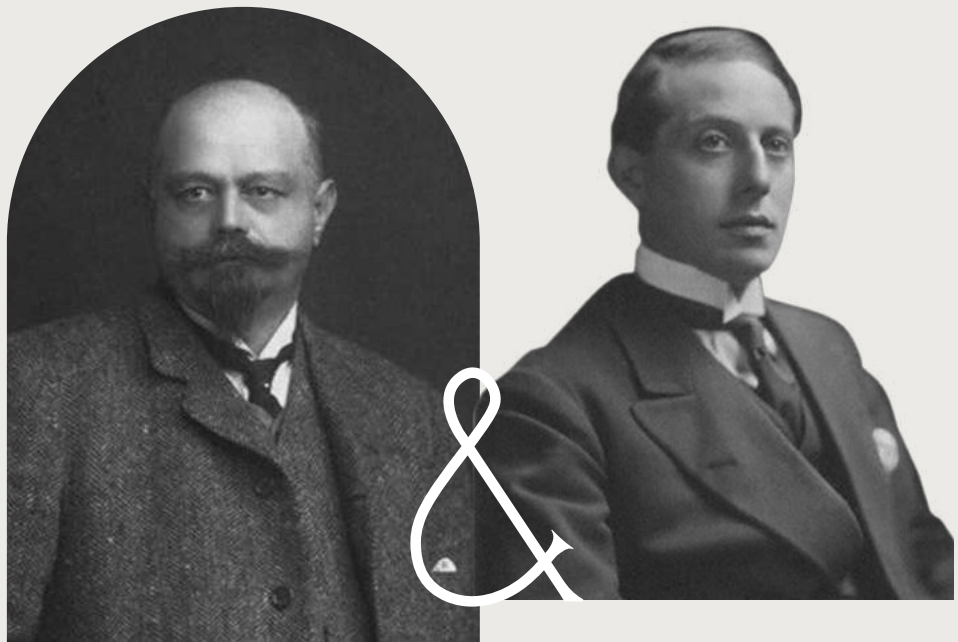




MEWES & DAVIS



Rooted  
in heritage  
and attention  
to detail...



# THE ARCHITECTS

Mewes & Davis has roots that go back almost a century. The building was originally designed by architects Charles Mewès and Arthur Davis and completed by Davis in 1927. Their firm became known for statement European buildings and luxurious ocean liners. Their works include the Ritz Hotels in London, Paris and Madrid.





# YOUR ARRIVAL

Stepping off bustling Bishopsgate,  
you are welcomed into a  
world of timeless elegance  
and cutting-edge design.

Historic, ornate features meet modern, twists on  
classical styling - all finished to perfection.





# 5<sup>TH</sup> FLOOR

The floors benefit from the highest calibre fitout and exceptional floor to ceiling heights.





MEWES & DAVIS

# 7TH FLOOR

The floors include lighting by Erco combined with oak flooring and glass partitions to create a stylish collaborative space.



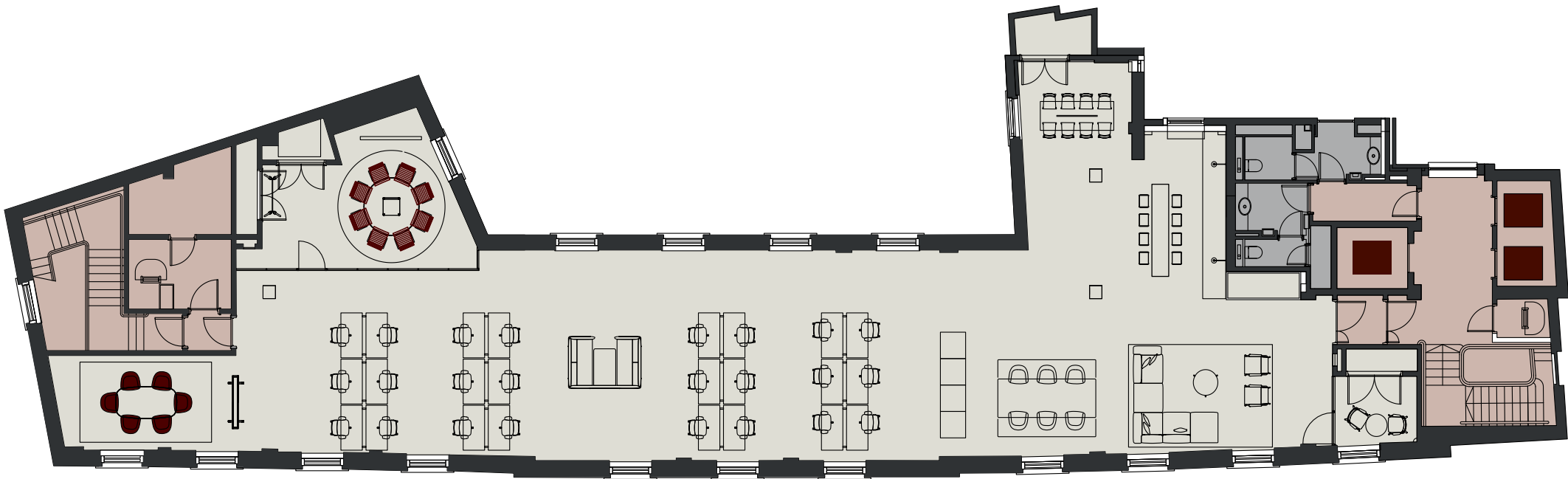


# SPACE THAT WORKS

**7<sup>TH</sup> FLOOR**  
**3,186 SQ FT / 296 SQ M**

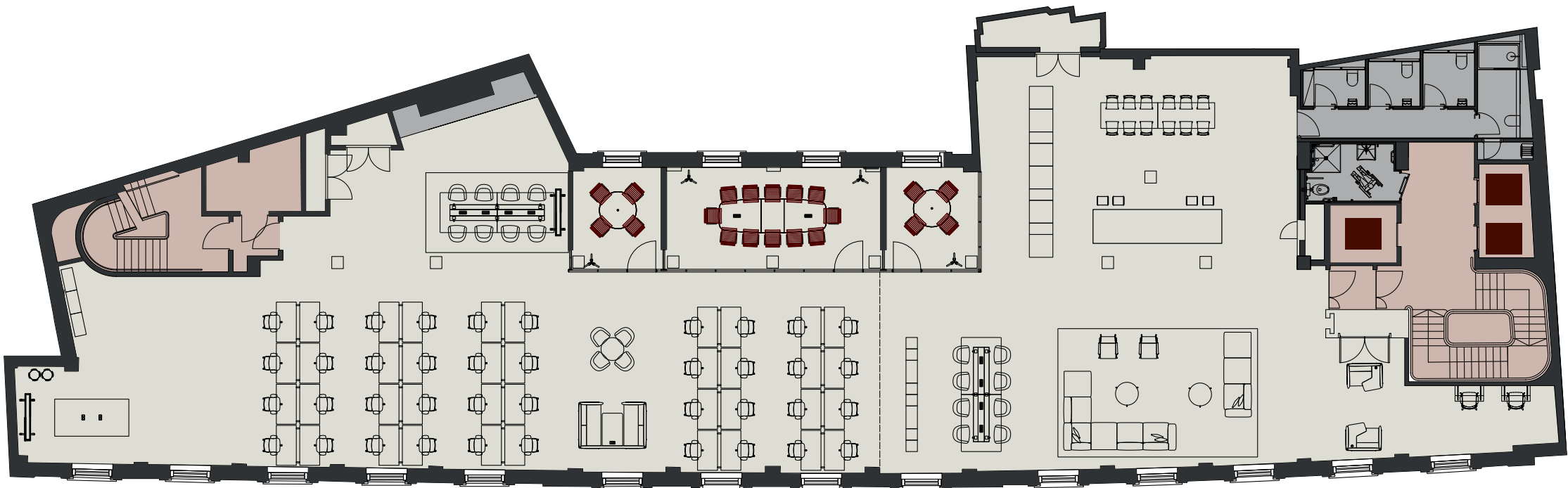
|                         |        |
|-------------------------|--------|
| DESKS                   | 24-40* |
| 4 PERSON MEETING ROOMS  | 2      |
| 8 PERSON MEETING ROOMS  | 1      |
| 14 PERSON MEETING ROOMS | 1      |

\*Option to add 2 more



**5<sup>TH</sup> FLOOR**  
**5,542 SQ FT / 515 SQ M**

|                         |       |
|-------------------------|-------|
| DESKS                   | 48-70 |
| 4 PERSON MEETING ROOMS  | 2     |
| 8 PERSON MEETING ROOMS  | 1     |
| 14 PERSON MEETING ROOMS | 1     |



All bases covered.

Flexible space designed with flex and designed with collaboration in mind. Considered breakout spaces and meeting rooms combine with quiet spaces and more...



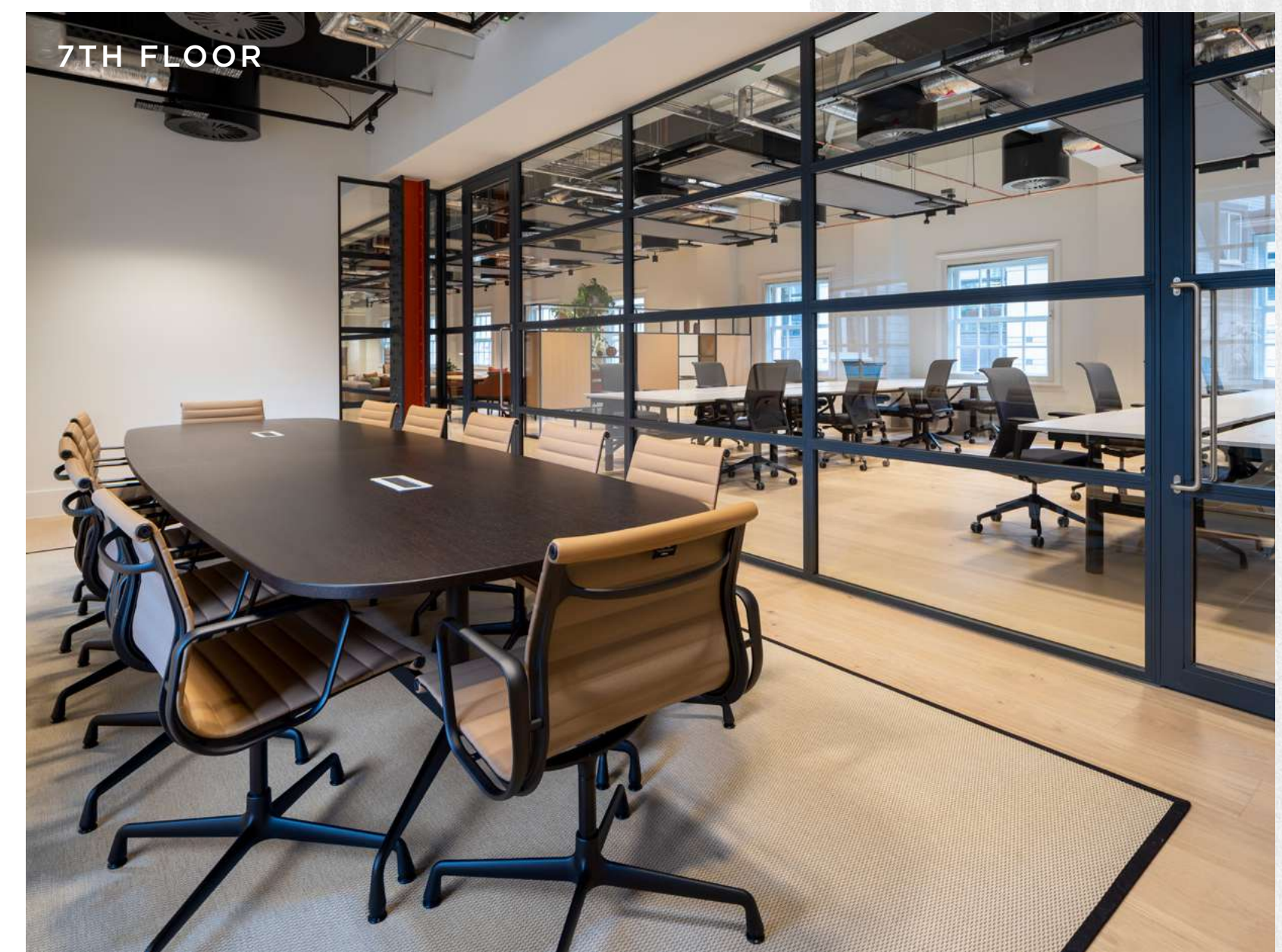




5TH FLOOR



5TH FLOOR



7TH FLOOR

DESIGNED TO LAST

60 BISHOPSGATE

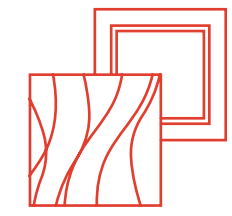


# VITRA

CLI Dartriver have collaborated with Vitra for the design, manufacture and delivery of the high-end office furniture for MEWES & DAVIS.

Driven by a mutual dedication to sustainability, quality and attention to detail Vitra are the perfect partner. For this project, we have sought to create a carefully curated design that stands the test of time, both aesthetially and in terms of durability.

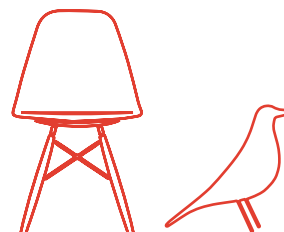
## SPECIFICATION



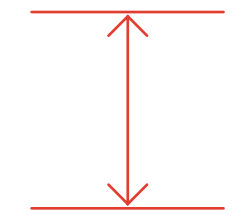
REFURBISHED  
RECEPTION WITH  
MARBLE FLOORING AND  
WOOD PANELLED FINISH



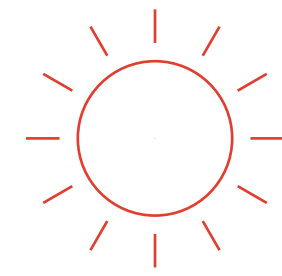
CAT B: FLOORS  
DESIGNED, CRAFTED  
AND FITTED, READY  
TO MOVE IN



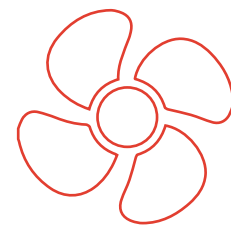
FURNITURE  
BY VITRA



FLOOR TO CEILING  
HEIGHT 2.6M-4.12M



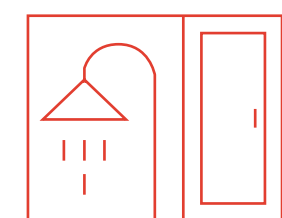
EXCELLENT  
NATURAL LIGHT



4-PIPE FAN COIL  
HEATING/COOLING  
UNITS



NEW  
SUPERLOOS



NEW CHANGING ROOMS,  
DRYING ROOM WITH  
44 LOCKERS AND 5 NEW  
SUPER-SHOWER UNITS



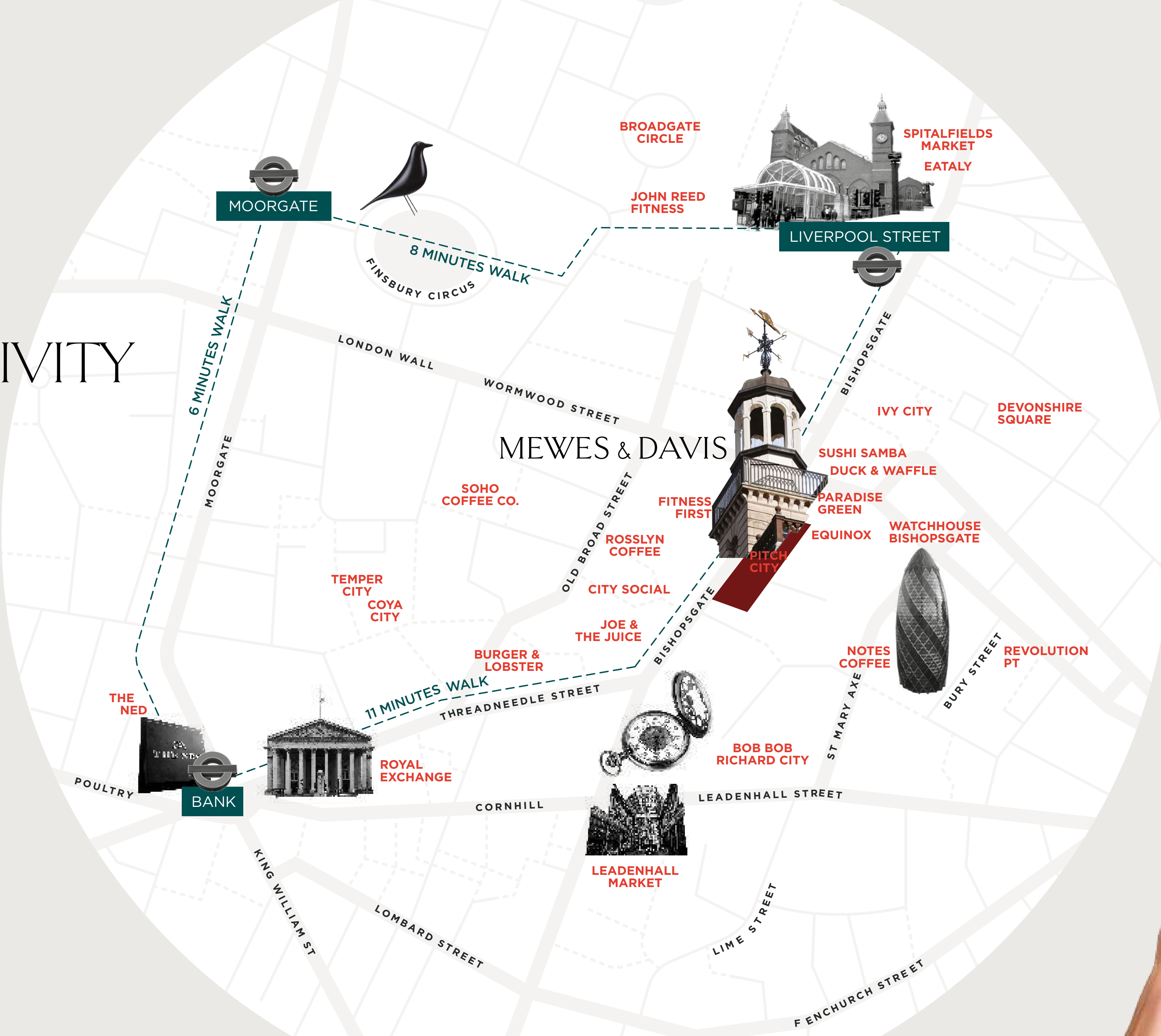
62  
CYCLE SPACES



# CONNECTIVITY & AMENITY

Mewes & Davis is located in the heart of London's historic financial district; the area is a hive of activity. With some of the City's most famous restaurants and hotels and an abundance of fitness and leisure activities; you're never far from the action.

Mewes & Davis is a short walk from Liverpool Street, Moorgate and Bank stations. With multiple tube lines, the fast-paced Elizabeth Line, National Rail and the Stanstead Express all on offer.



|                  |         |   |
|------------------|---------|---|
| ✕                | ⊖       | ➡ |
| FARRINGTON       | 3 MINS  |   |
| LONDON BRIDGE    | 5 MINS  |   |
| HOLBORN          | 7 MINS  |   |
| WATERLOO         | 7 MINS  |   |
| KING'S CROSS     | 8 MINS  |   |
| PADDINGTON       | 14 MINS |   |
| CANARY WHARF     | 14 MINS |   |
| CITY AIRPORT     | 21 MINS |   |
| HEATHROW AIRPORT | 41 MINS |   |





MEWES & DAVIS

CLI  
DARTRIVER



**FOLGATE BUILDING**  
LONDON E1

60 BISHOPSGATE

# PROJECT PIPELINE



**63 COLEMAN STREET**  
LONDON EC2



**ELDON HOUSE**  
LONDON EC2

CLI Dartriver was formed in 2020. The team has over 30 years of investment and development experience and have delivered over 2.8 million sq ft of market leading commercial office space in London.

CLI Dartriver projects are underpinned by unparalleled attention to detail and design quality; together with a commitment to distinctive architecture.



# CONTACTS

## RX LONDON

**SOPHIE BARTLETT**

sophie.bartlett@rx.london  
+44 (0)7802 338 295

**JACK MOATES**

jack.moates@rx.london  
+44 (0)7494 232 394

## BH<sub>2</sub>

**JACK BEEBY**

jackb@bh2.co.uk  
+44 (0)7841 802 097

**DAISY WALDER**

daisyw@bh2.co.uk  
+44 (0)7425 828 376

